

**Products**

- OPTERON
- HYPERTRANSPORT
- HOME
- HD-KIOSK
- MXF
- HD-SDI SERVERS
- INTEGRATIONS
- UNIVERSITY

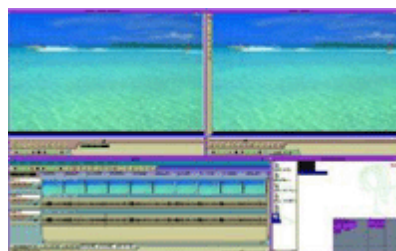
**CINELERRA – The World's First 64 Bit HD Editing and FX System**

CINELERRA, the revolutionary Linux based Open Source HD media editing system, developed by Heroine Warrior, and expertly integrated by LMA gives you the power of HD-SDI and SDI-601 on a state-of-art Linux video workstation. And developed for OPTERON technology, the LMA CINELERRA system is a powerful and highly productive workstation for adding cost effective hardware and Linux software for Video and film production studios. The LMA CINELERRA system will support SMPTE-292 and SMPTE-259 native 10-bit resolution - the maximum resolution allowed in SMPTE SDI standards on OPTERON. CINELERRA was the first media editing system ported to support the AMD OPTERON 64 bit technology. CINELERRA has a number of effects built into the system including numerous telecine effects, video special effects including compositing, and a complete audio effects system.

Linux Media Arts

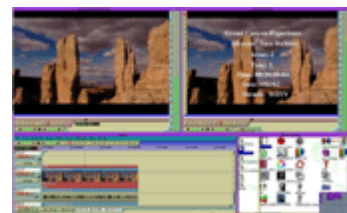
Linux Media Arts (LMA), has been developing and marketing Open Source Linux solutions for professional media systems since 1999. Linux Media Arts has exhibited at NAB and IBC for the last three years, demonstrating media applications and hardware, including non-linear editors, servers, and various video for Internet streaming systems.

LMA is your best choice for working in the true Linux development environment, a place where the developer and engineer can share Source Code, SDK's, and drivers to achieve your highest productivity, whether in the Studio or the product development lab.



HDTV EDITING

This complete resolution independent editing solution seemingly has unlimited capabilities. Whether you are finishing a project in 1080i or in 24p Cinelerra can handle the job. With this latest addition to our production capabilities Cinelerra is truly a concept to completion application developing into a premiere editing and compositing system - and it is in Linux and it is Open Source.



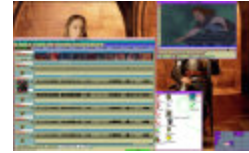
HDTV EDITING WITH SLATES

The Cinelerra Slate Generator is the ideal system for a cost-effective method of inserting during HDTV video transfers. This complete package will key one or many static over the full bandwidth program video signal. Slates in flash memory and may be downloaded to the Cinelerra Slate Generator via an ethernet interface into



### SIX CHANNEL AUDIO ROUTING

Mixing down 6 channel audio is easy with six channel HDTV track routing.



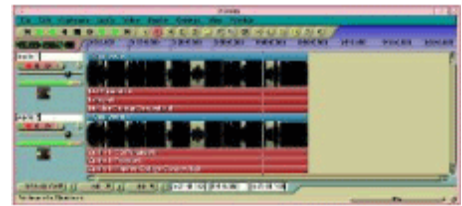
### SIX CHANNEL HDTV AUDIO

Mix 6 channel audio for your HDTV movie.



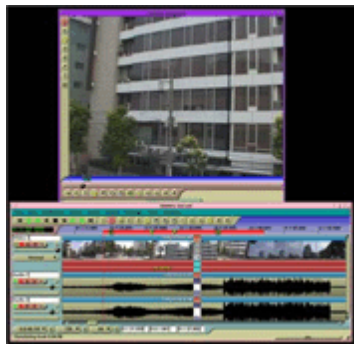
### AUDIO RECORDING

Edit your largest products with Cinelerra using the capability of unlimited audio tracks. Record anything (vocals, acoustic instruments, etc.) directly into Cinelerra. Professional caliber editing uses audio editing features normally found in pro sound studios. Complete 24-bit audio quality with Cinelerra. Create elaborate automated mixdowns of all your tracks in one convenient window. Real-time audio plug-ins allow you to apply reverb, parametric EQ, compression, expansion, limiting, echo, and Heroine Concert Hall; make changes on the fly in real time. Seamless integration between audio and MIDI.



### AUDIO EFFECTS

No learning curve: if you know audio, you know Cinelerra! Create the ultimate mix with Cinelerra's plug-ins. Graphic editing of audio. Make precise, intuitive edits to your music in seconds. Edit with your ears as well as your eyes. Sync audio and MIDI to QuickTime for Linux movies. Write scores entirely in Cinelerra; cue instantly to any location; cycle-record to picture. Unlimited number of virtual audio tracks. Create as many audio tracks as you need. Graphic edge trimming. Adjust the start/end points of audio regions to eliminate unwanted audio. Cut, copy, paste, shift, repeat and otherwise edit audio while your music plays. Drag and drop audio region placement in event list and graphic editor. Instantly place audio events into your sequence; build audio region playlists in seconds. Complete audio file management, including compact command.



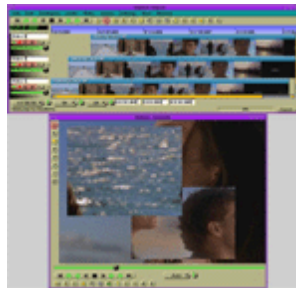
### HD RENDERING

Background rendering is represented by a red bar in the timeline.



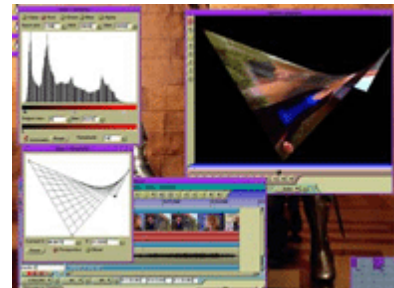
### HD RENDERFARM

Cinelerra renderfarm is an application which allows you to distribute the rendering tasks through the TCP/IP-based networks. Now you can use the network of 32 and 64 bit machines to render single images and animations simultaneously on all the computers used. Using the Cinelerra renderfarm application on several computers you can decrease the rendering time dramatically.



### TRACKSIZE

Cinelerra's software offers you the ability to customize the size and configurations of your tracksize in the edit window and for the output.



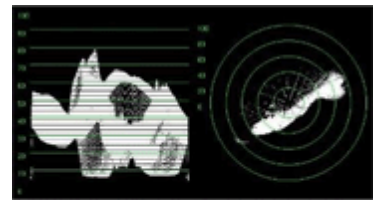
### PERSPECTIVE

The histogram and perspective effects bring new possibilities for distortion. The perspective does concave surfaces in stretch mode while doing traditional affine surfaces in perspective mode. Due to the quantization of 8 bits, 8 bit colormodels always generate combs in the histogram while 16 bit colormodels usually generate a smooth histogram.

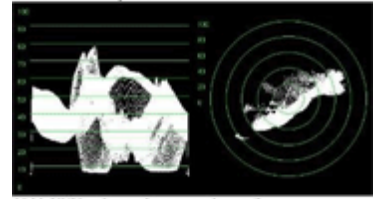


### PLAYLIST

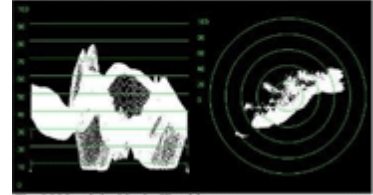
Cinelerra's software offers you the ability to customize the playlist to play long-form programs and features.



8 bit YUV codec produces bands in the waveform view



10 bit YUV codec produces smooth waveform



The 16 bit original looks like this

### VIDEOSCOPE

Cinelerra VideoScope is a software waveform and vector scope. It performs realtime luminance and chrominance analysis of any video source, QuickTime for Linux movie or still image, allowing you to adjust your video digitizer's image settings to obtain the best possible video quality.

FEATURES	CINELERRA BENEFITS
Unlimited Audio Tracks Unlimited Video Tracks	Allows users to maximize Cinelerra based on the capabilities of the system. Utilizing CINELERRA on OPTERON allows user to maximize capabilities of applications.
Multiple Image Sequence I/O	Provides use the capability to review multiple source sequences on same timeline.
Batch Capture Batch Rendering	Allows artist to render in background while continuing to use OPTERON on Cinelerra in real-time.
Real Time Effects Real Time Titling Real Time Cuts Real Time Dissolves Free Form Editing Background Rendering	Maximizes productivity for creative artists by limiting time spent on rendering and effects.

VIDEO EFFECTS	Aging TV Blur BrightnessContrast Chroma Key Color Balance De-Interlace Denoise Video Oil Painting Downsample	Flip Frames to Fields Freeze Frame Gradient Histogram Holographic Video Hue Saturation Sharpen Shift Interlace Channels	Swap Channels Time Average Title Translate VideoScope Wave Whirl YUV Zoom Blur
VIDEO TRANSITION	Bandslide Flash Wipe	Bandwipe Iris Square	Dissolve Slide
AUDIO EFFECTS	Compresor DeSpike Gain Pitch Shift Synthesizer	Delay Audio EQ Parametric Heroine Concert Hall Sound Level	Denoise Freeverb Invert Audio Spectrogram
AUDIO TRANSITION	Crossfade		

[ABOUT LMA](#)

[NEWS & EVENTS](#)

[SERVICES](#)

[PARTNERS](#)

[CONTACT](#)

Copyright 2003 - Linux Media Arts, Inc